


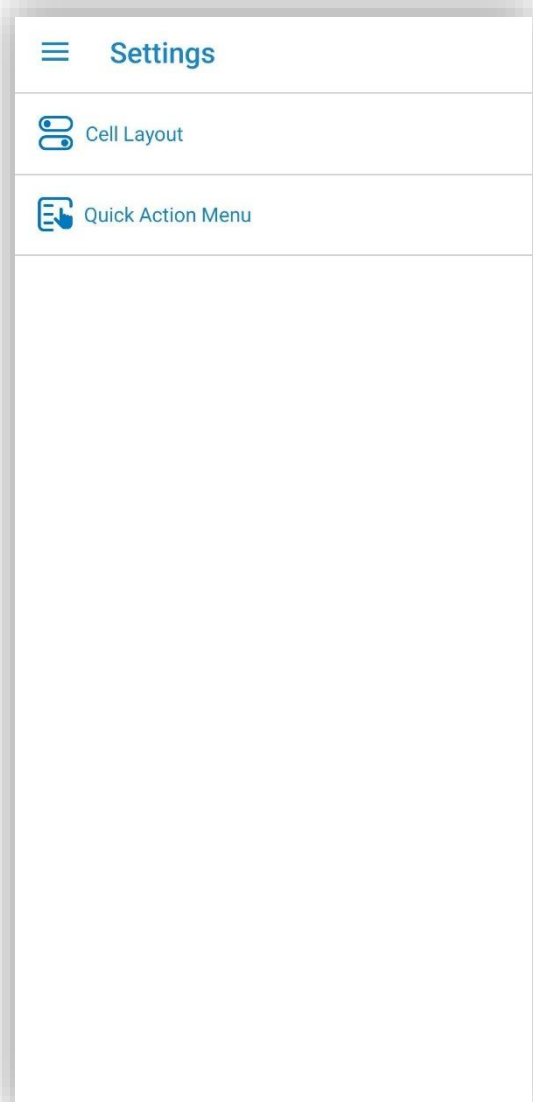
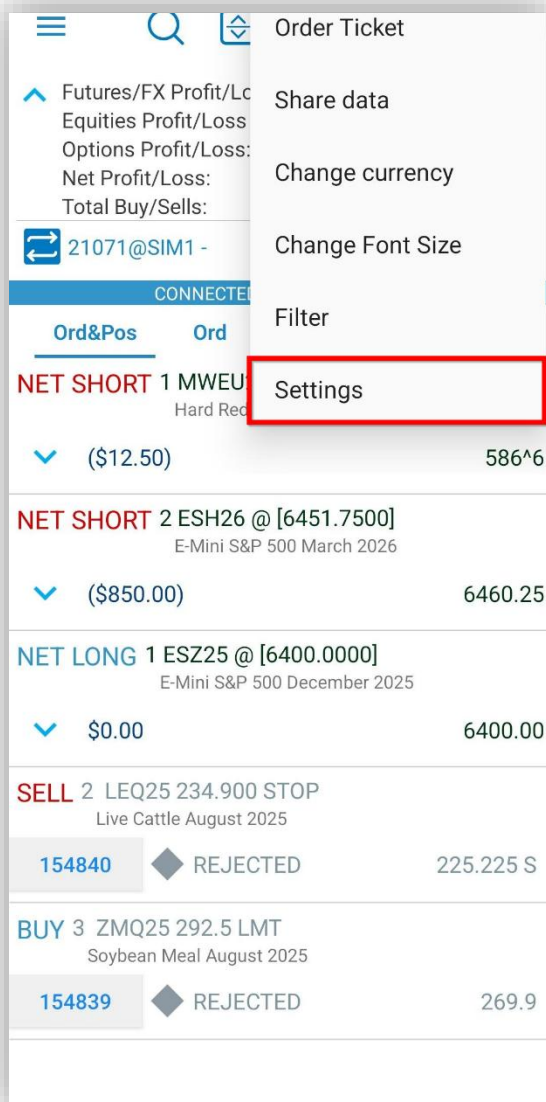
# WHAT'S NEW

**Version 6.2.0**

A network diagram of a globe with nodes and connecting lines. The globe is composed of a grid of nodes connected by lines, forming a spherical shape. The nodes are represented by small blue dots, and the lines are thin, light blue lines. The background is a gradient of blue, darker at the bottom and lighter at the top.

# Orders & Positions Monitor

- Settings for Cell Layout and Quick Action Menu have been added to the Orders & Positions Monitor
- To access them you will need to click on the 3 dots button  located on the top right corner of the screen



- You can change the look of for the cell layout by going to Cell Layout
- And you can edit the actions that appear on long tap on an order or position from the Quick Actions Menu

**Cell Layout**

**Profit/Loss Label Preferences**

- Colored Coded Background
- Colored Coded Text
- Default Text Color
- Show Instrument Description
- Show Profit/Loss for filled order
- Show Fill time on Top Layout

**Order/Position Cell Preview**

**NET LONG** 2 ESH25 @ 1386.50  
E-Mini S&P 500 January 2025

▼ \$50.0 1306.75

	FILL TIME
<b>BOUGHT</b> 2 ESH25 @ 1386.50	02:49:96 AM
150251 \$50.0 1306.75	

**Quick Action Menu**

**Position Quick Actions**

Certain actions may be unavailable due to position status.

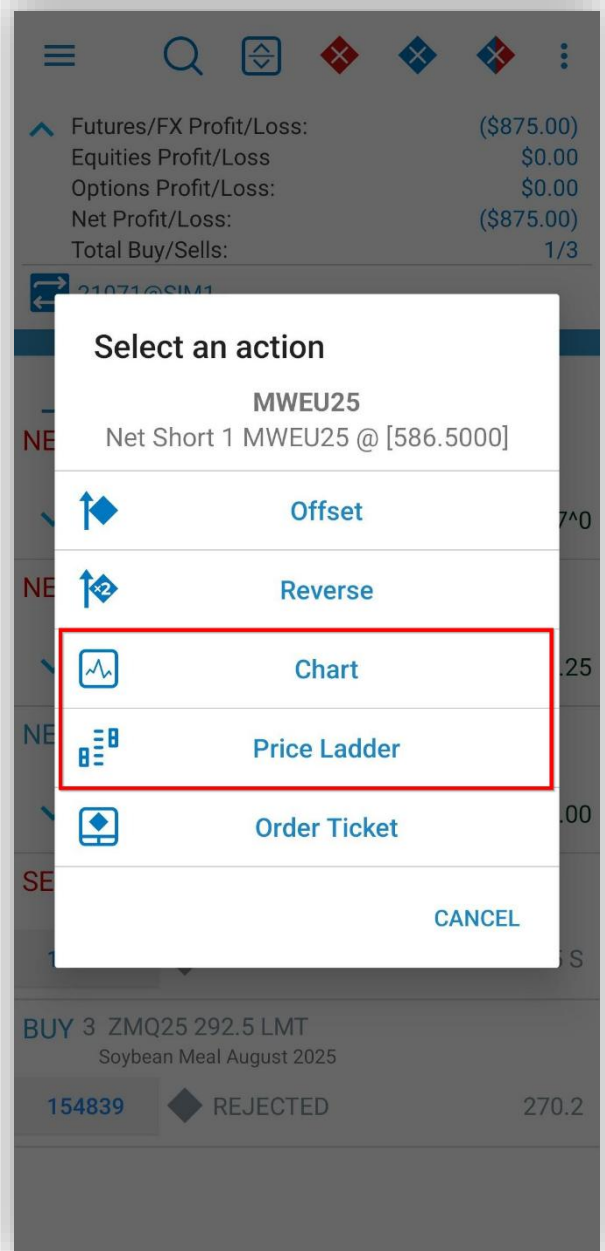
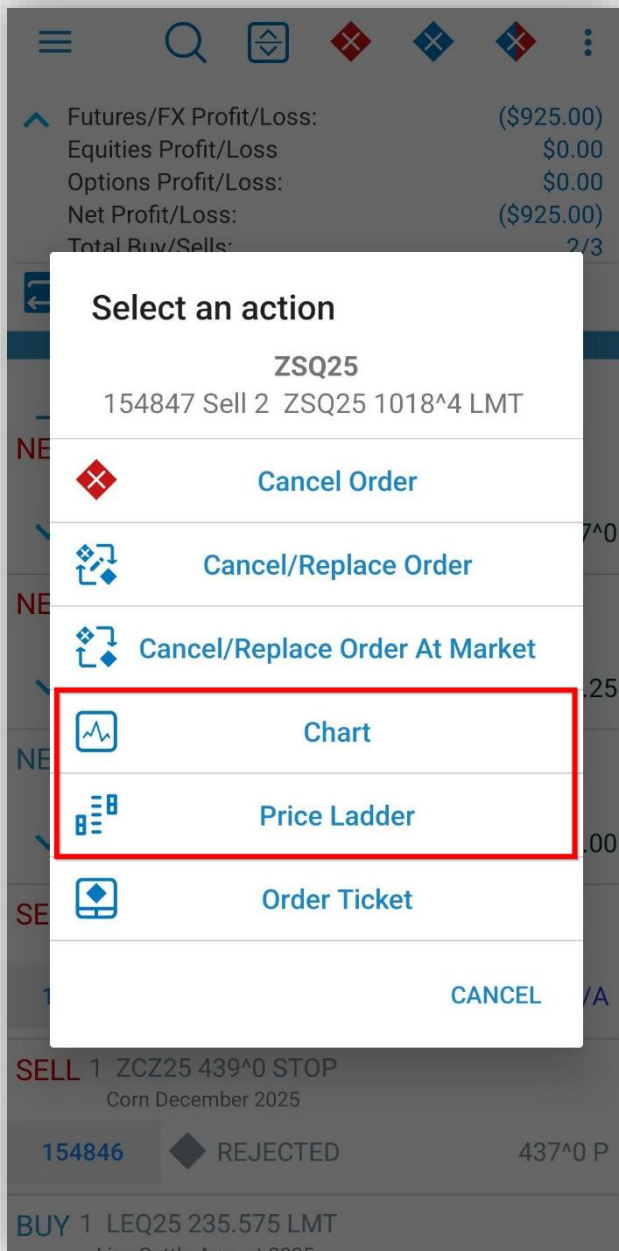
- Offset
- Reverse
- Chart
- Price Ladder
- Order Ticket

**Order Quick Actions**

Certain actions may be unavailable due to order status.

- Cancel Order
- Cancel/Replace Order
- Cancel/Replace Order At Market
- Chart
- Price Ladder
- Order Ticket

- The Chart and Price Ladder options have been added here



- Orders & Positions Monitor Sections: you can quickly filter what you see on screen by tapping on the desired section

Futures/FX Profit/Loss: (\$875.00)  
 Equities Profit/Loss: \$0.00  
 Options Profit/Loss: \$0.00  
 Net Profit/Loss: (\$875.00)  
 Total Buy/Sells: 1/3

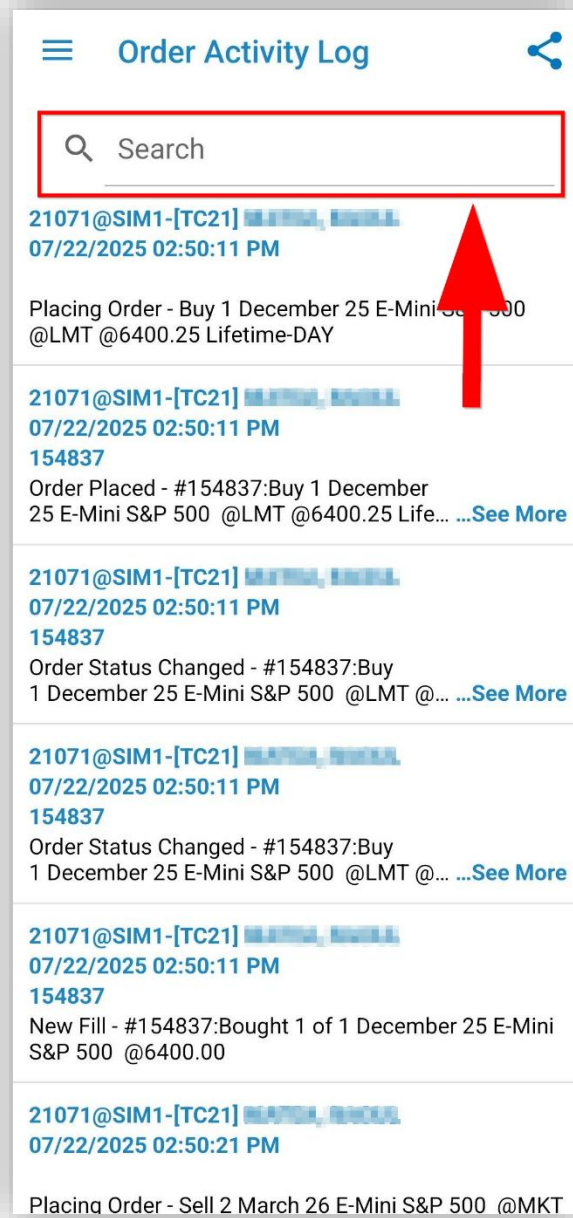
21071@SIM1 -

CONNECTED TO ORDER ENTRY

Ord&Pos	Ord	Pos	Working Ord
<b>NET SHORT 1 MWEU25 @ [586.5000]</b> Hard Red Spring Wheat September 2025			
✓ (\$25.00)			587^0
<b>NET SHORT 2 ESH26 @ [6451.7500]</b> E-Mini S&P 500 March 2026			
✓ (\$850.00)			6460.25
<b>NET LONG 1 ESZ25 @ [6400.0000]</b> E-Mini S&P 500 December 2025			
✓ \$0.00			6400.00
<b>SELL 2 LEQ25 234.900 STOP</b> Live Cattle August 2025			
154840	◆	REJECTED	225.225 S
<b>BUY 3 ZMQ25 292.5 LMT</b> Soybean Meal August 2025			
154839	◆	REJECTED	270.2

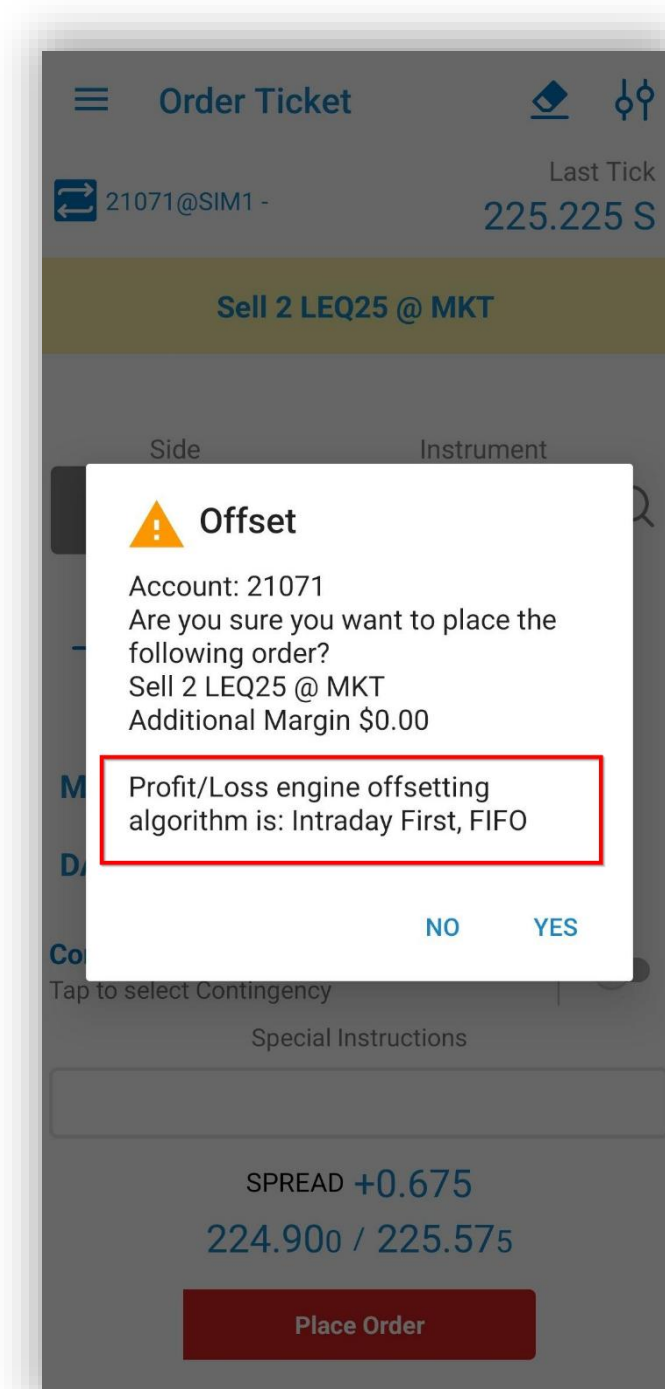
# Order Activity Log

- A search bar has been added to help you instantly locate specific orders and details within your login session




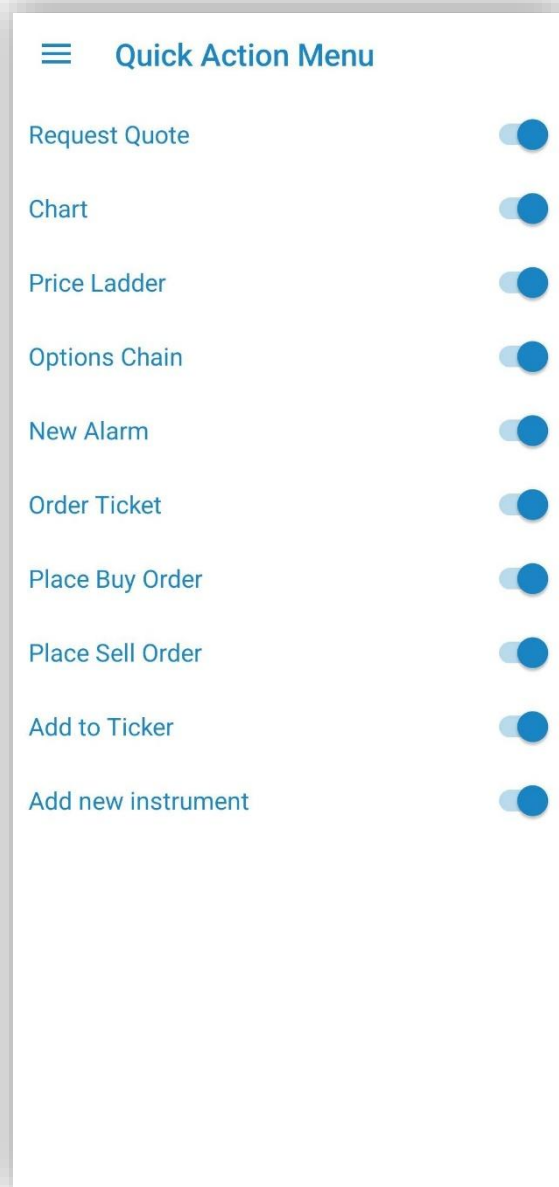
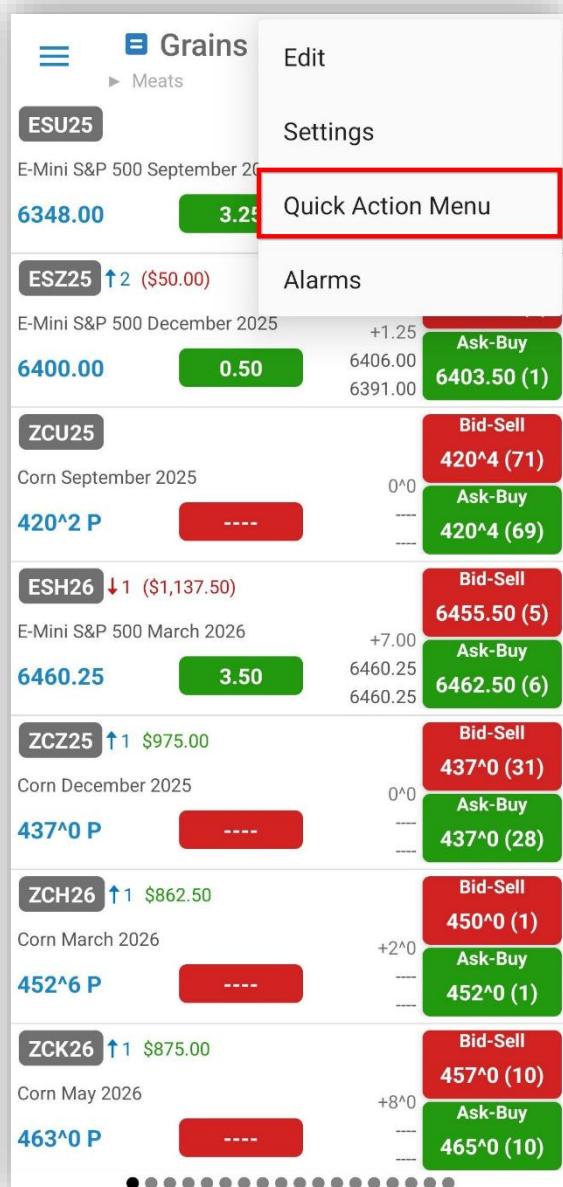
# Order Ticket


- The offset algorithm is now visible on the Order Ticket when performing an Offset

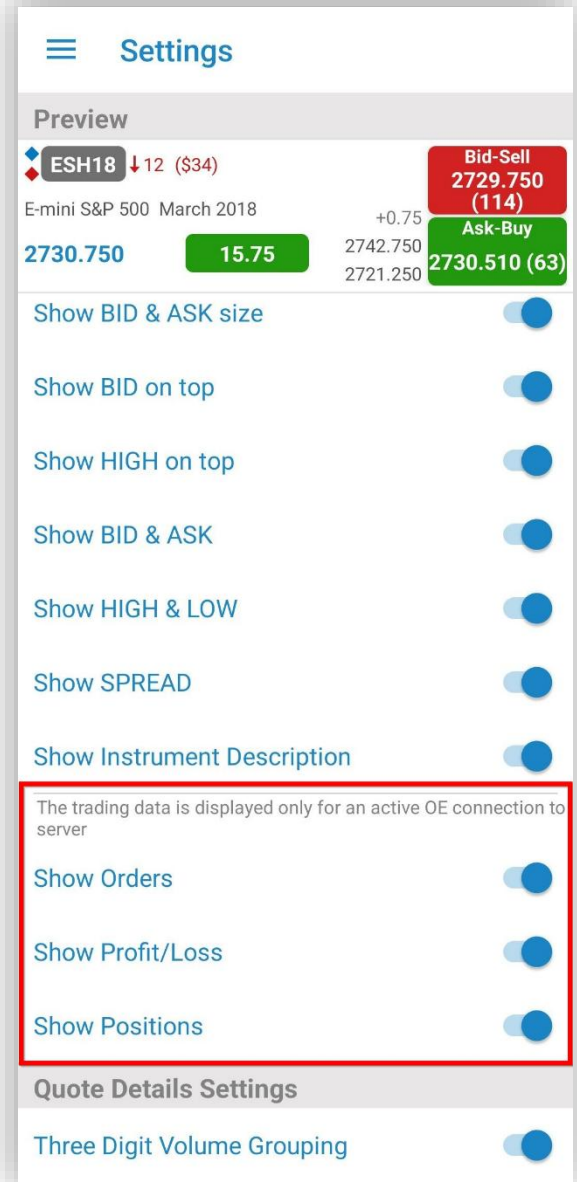
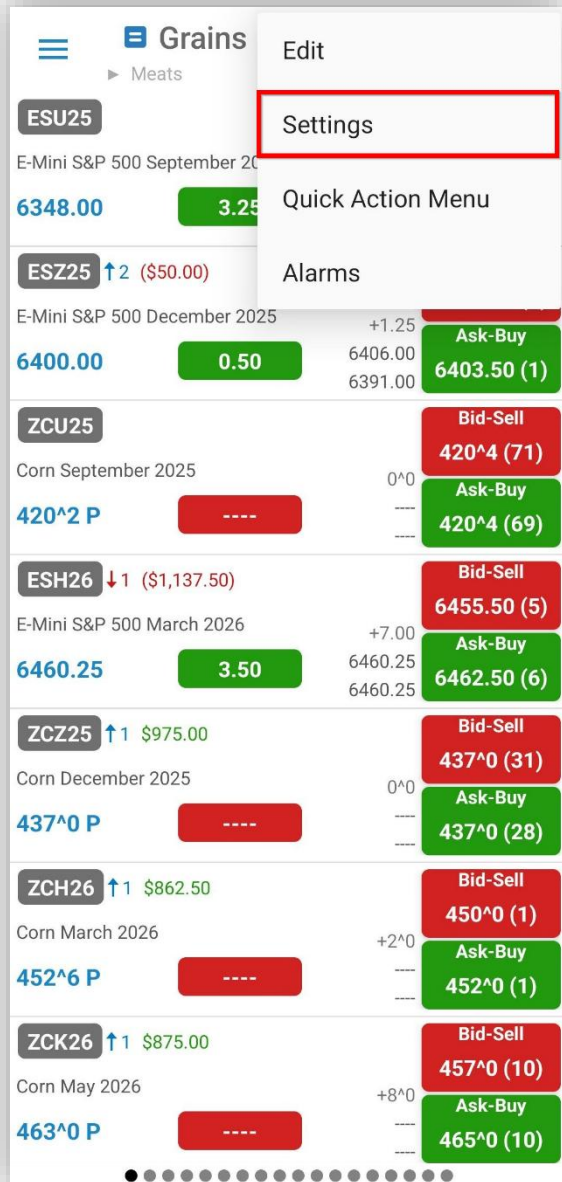


# Quotes Monitor

- Updated design for Quotes Monitor
- The location for the Quick Action Menu has changed, you can now access it more quickly
- To access it just tap the  button and then tap Quick Action Menu

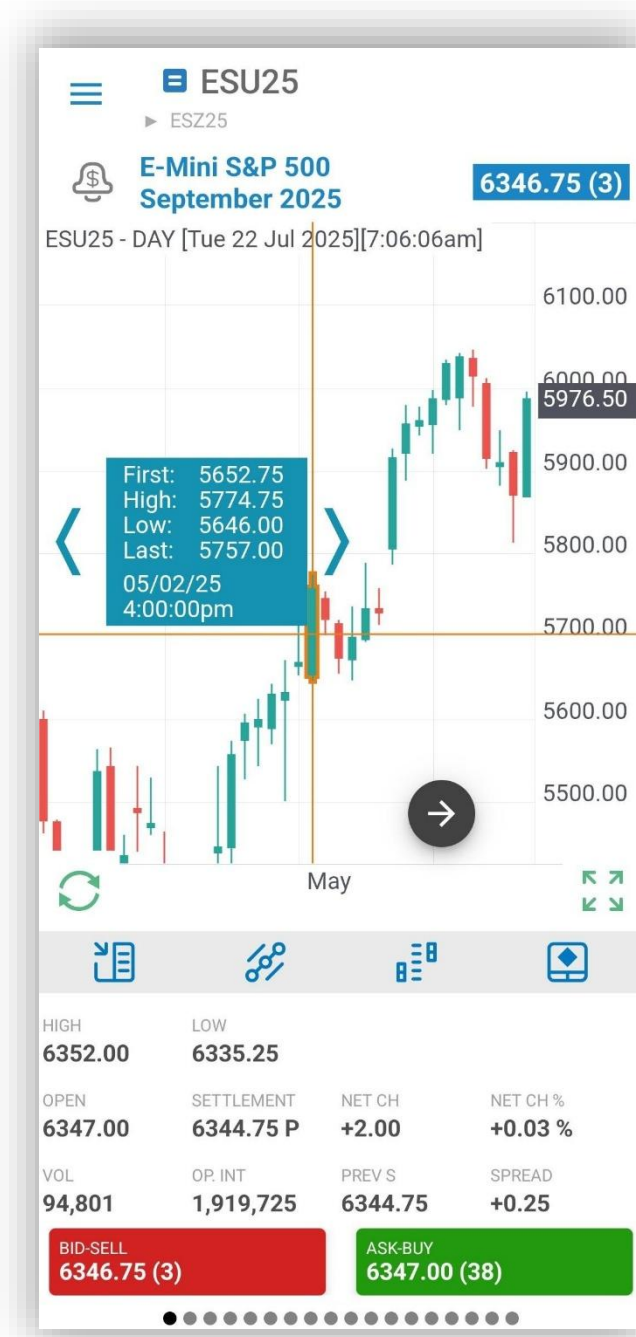


- You can now view your orders, positions and profit/loss directly in the Quotes Monitor screen
- To customize which is displayed, tap the 3 dots button  and then tap Settings, and choose which you want to be shown in the Quotes Monitor cells



# Quote Details

- Updated design for the Quote Details
- You can now scroll, zoom and activate the tooltip and crosshair in the mini chart
- To scroll drag the chart towards the desired position
- You can zoom by using pinch in/pinch out
- To activate the tooltip and crosshair double tap in the mini chart



# Request Quote

- The Request Quote screen design has been updated.

The screenshot shows a mobile application interface for a 'Request Quote' screen. At the top, there is a navigation bar with a hamburger menu icon on the left, and two tabs: 'Request Quote' (which is active and underlined) and 'Strategy Builder'. Below the navigation bar, there is a text instruction: 'Please complete the fields then press the Request Quote button to submit a request'. The main form area contains three sections: 1. 'INSTRUMENT' with a text input field containing 'ESU25' and a magnifying glass search icon on the right. 2. 'SIDE' with three radio button options: 'Buy' (selected), 'Sell', and 'Not disclosed'. 3. 'QUANTITY' with a numeric input field showing '0' and minus/plus buttons on either side. At the bottom of the screen is a large blue button labeled 'REQUEST QUOTE'.

# Navigation Drawer

- The design of the Navigation Drawer has been updated as well

